

SHADY DR. (30' R/W) CHESTER FITCH 82/610

STONE CORNER 169.02' FROM STONE CORNER TO NORTH MOST CORNER OF 14.00 ACRE TRACT

DWIGHT C. MYERS AND DAVID C. LOCKHART RB 21, PG. 220

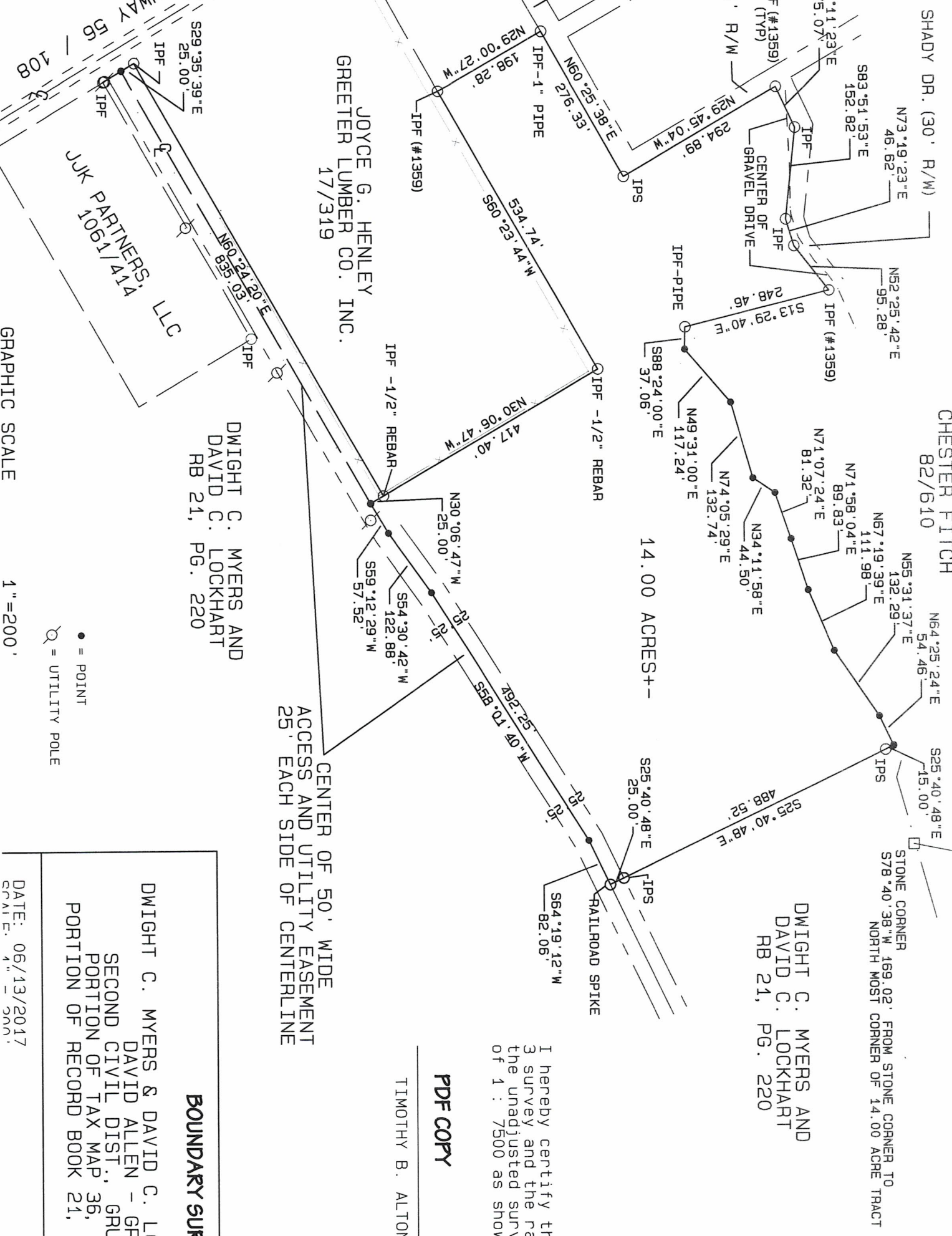
14.00 ACRES +-

JOYCE G. HENLEY GREETER LUMBER CO. INC. 17/319

DWIGHT C. MYERS AND DAVID C. LOCKHART RB 21, PG. 220

JJK PARTNERS, LLC 1061/414

ACCESS AND UTILITY EASEMENT 25' EACH SIDE OF CENTERLINE



I hereby certify that
 3 survey and the ratio
 the unadjusted survey
 of 1 : 7500 as shown

PDF COPY

TIMOTHY B. ALTONEN

BOUNDARY SURVEY

DWIGHT C. MYERS & DAVID C. LOCKHART
 DAVID ALLEN - GRAN
 SECOND CIVIL DIST. GRUND
 PORTION OF TAX MAP 36, PAI
 PORTION OF RECORD BOOK 21, PAI

DATE: 06/13/2017
 SCALE: 1" = 200'

GRAPHIC SCALE

1" = 200'

- = POINT
- ⊗ = UTILITY POLE